



Intel[®] Matrix Storage Technology

OEM Technical Guide

For the Intel[®] Matrix Storage Manager 7.6 Software

July, 2007

Revision 2.0

Intel Confidential

Document Number: **NDA Required**



INFORMATION IN THIS DOCUMENT IS PROVIDED IN CONNECTION WITH INTEL® PRODUCTS. NO LICENSE, EXPRESS OR IMPLIED, BY ESTOPPEL OR OTHERWISE, TO ANY INTELLECTUAL PROPERTY RIGHTS IS GRANTED BY THIS DOCUMENT. EXCEPT AS PROVIDED IN INTEL'S TERMS AND CONDITIONS OF SALE FOR SUCH PRODUCTS, INTEL ASSUMES NO LIABILITY WHATSOEVER, AND INTEL DISCLAIMS ANY EXPRESS OR IMPLIED WARRANTY, RELATING TO SALE AND/OR USE OF INTEL PRODUCTS INCLUDING LIABILITY OR WARRANTIES RELATING TO FITNESS FOR A PARTICULAR PURPOSE, MERCHANTABILITY, OR INFRINGEMENT OF ANY PATENT, COPYRIGHT OR OTHER INTELLECTUAL PROPERTY RIGHT. Intel products are not intended for use in medical, life saving, or life sustaining applications.

Intel may make changes to specifications and product descriptions at any time, without notice.

The Intel® 82801IR/IO I/O Controller Hub component may contain design defects or errors known as errata which may cause the product to deviate from published specifications. Current characterized errata are available on request.

Contact your local Intel sales office or your distributor to obtain the latest specifications and before placing your product order.

Intel and the Intel logo are trademarks or registered trademarks of Intel Corporation or its subsidiaries in the United States and other countries.

*Other names and brands may be claimed as the property of others.

Copyright © 2005-2007, Intel Corporation



Contents

1	About This Document.....	6
2	Intel® Matrix Storage Technology	7
2.1	Overview of RAID Levels	7
2.2	Typical usage model for RAID levels	8
3	Intel® Matrix Storage Technology	10
3.1	Intel® Matrix Storage Manager 7.6	10
3.2	Intel® Matrix Storage Manager Option ROM	10
3.3	Intel RAID Configuration Utility.....	11
3.3.1	RAIDCfG Utility for MS-DOS*.....	11
3.3.2	RAIDCfG32 Utility for Microsoft* Windows*	12
4	Creating a RAID Volume.....	13
4.1	Using the Intel Matrix Storage Console.....	13
4.2	Using the Intel Matrix Storage Manager option ROM User Interface	13
4.3	Using the RAID Configuration Utility	14
5	Deleting a RAID Volume	15
5.1	Using the Windows User Interface Utility	15
5.2	Using the Option ROM User Interface	15
5.3	Using the RAID Configuration Utility	16
6	Common RAID Setup Procedures	17
6.1	Build a SATA RAID 0, 1, 5 or 10 System	17
6.2	Build a SATA “RAID Ready” System.....	18
6.3	Migrate to RAID 0 or RAID 1 on an Existing “RAID Ready” System.....	18
6.4	Migrate an Existing Data Hard Drive to a RAID 0 or RAID 1 Volume	19
6.5	Migrate from RAID 0/1/10 to RAID 5 system	20
6.6	Create a RAID volume on SATA While Booting to PATA	20
6.7	Build a RAID 0 or RAID 1 System in an Automated Factory Environment	22
6.7.1	Part 1: Create the Master Image	22
6.7.2	Part 2: Apply the Master Image	22
7	RAID Volume Data Verification and Repair Feature.....	24
7.1	Verify RAID Volume Feature	24
7.2	Using Verify and Repair RAID Volume Feature	24
8	Intel® Rapid Recover Technology	25
9	Pre-Installation of the Intel® Matrix Storage Manager Driver	28
9.1	Pre-Installation Using the “F6” Method	28
9.2	Unattended Installations of Microsoft Windows XP	30
9.3	Creating a Floppy Disk containing the Intel Matrix Storage Manager Driver	31



	9.3.1	Method 1 – Using Install applications	31
	9.3.2	Method 2: Using F6 application	32
10		Determining the Version of the Software Components	33
	10.1	Determining the Version of the RAID Driver	33
	10.1.1	Using the Intel Matrix Storage Console	33
	10.1.2	Using the Intel Matrix Storage Manager File Properties.....	33
	10.2	Determining the Version of the Option ROM.....	34
	10.2.1	Using the Intel Matrix Storage Console	34
	10.2.2	Using the Intel Matrix Storage Manager Option ROM User Interface ..	34
11		Uninstallation.....	35
	11.1	Uninstalling the Intel Matrix Storage Manager Software (except the RAID Driver)	35
	11.2	Disabling the RAID Driver by Disabling the RAID Controller	35
12		Registry Customizations	37
	12.1	Tray Icon Configuration	37
	12.1.1	User Notification Balloons.....	37
	12.1.2	User Notification Dialogs	37
	12.1.3	Customize Support URLs in Intel Matrix Storage Console.....	38
	12.1.4	Disable the pop-up Window with BIOS incompatibility Warning	39
13		Enabling Link Power Management (LPM) with Intel® Matrix Storage Manager	41
	13.1	Instructions to enable LPM.....	41
14		Glossary	43

Revision History

Revision Number	Description	Revision Date
1.0	Initial Release Version	April 2005
1.1	Updated for 5.1 release	June 2005
1.2	Updated for 5.6 Release	August 2005
1.3	Updated for 5.7 Release	November 2005
1.4	Updated for 6.0 Release	December 2005
1.5	Updated for 6.1 Release	June 2006
1.6	Updated for 7.0 Alpha Release	August 2006
1.7	Updated for 7.0 Beta Release	November 2006
1.8	Updated for 7.5 Alpha Release	December 2006
1.9	Updated for 7.5 PV Release	April 2007
2.0	Updated for 7.6 PV Release	July 2007





1 **About This Document**

This document will assist customers in evaluating, testing, configuring, and enabling RAID and AHCI functionality on platforms using the *Intel® Matrix Storage Manager 7.6* software for the following chipset components:

- Intel® 82801IR/IO Serial ATA RAID Controller
- Intel® 82801IR/IO Serial ATA AHCI Controller
- Intel® 82801HEM I/O Serial ATA RAID Controller
- Intel® 82801HEM I/O Serial ATA AHCI Controller
- Intel® 82801HR/HH/HO Serial ATA RAID Controller
- Intel® 82801HR/HH/HO Serial ATA AHCI Controller
- Intel® 82801GHM Serial ATA RAID Controller
- Intel® 631xESB/632xESB Serial ATA RAID Controller
- Intel® 631xESB/632xESB Serial ATA AHCI Controller
- Intel® 82801GBM Serial ATA AHCI Controller
- Intel® 82801GR/GH Serial ATA RAID Controller
- Intel® 82801GR/GH Serial ATA AHCI Controller
- Intel® 82801FR Serial ATA RAID controller
- Intel® 82801FBM Serial ATA AHCI controller

This document also describes installation procedures, RAID volume management such as creating, deleting, and modifying volumes, common usage models, and any special notes necessary to enable customers to develop their RAID-compatible products.



2 *Intel® Matrix Storage Technology*

Intel® Matrix Storage Technology provides added performance and reliability for systems equipped with serial ATA hard drives to enable optimal PC storage solution. It offers value add-features such as RAID and advanced Serial ATA* capabilities for the Microsoft Vista*, Microsoft Windows* XP and Microsoft Windows Server 2003 operating systems.

The RAID solution supports RAID level 0 (striping), RAID level 1 (mirroring), RAID level 5 (striping with parity) and RAID level 10 (striping and mirroring).

This helps alleviate hard drive bottlenecks by taking advantage of the dual independent Serial ATA controllers integrated in the Intel ICH9 component. System integrators can offer up to four hard drives with no additional loss of PCI resources (request/grant pair) or add-in card slots.

A configuration supporting two RAID levels can also be achieved by having two volumes in a single RAID array that use Intel Matrix RAID Technology. Targeted for desktops and workstations, this RAID solution addresses the demand for high-performance or data-redundant platforms.

2.1 Overview of RAID Levels

RAID 0 (striping)

RAID level 0 combines two or more hard drives so that all data is divided into manageable blocks called strips. The strips are distributed across the array members on which the RAID 0 volume resides. This improves read/write performance, especially for sequential access, by allowing adjacent data to be accessed from more than one hard drive simultaneously. However, data stored in a RAID 0 volume is not redundant. Therefore, if one hard drive fails, all data on the volume is lost.

The RAID 0 volume appears as a single physical hard drive with a capacity equal to twice the size of the smaller hard drive.

The Intel® ICH9 I/O Controller with Intel Matrix Storage Technology allows up to six drives to be combined into a single RAID 0 array, providing additional scaling of storage performance.

RAID 1 (mirroring)

RAID level 1 combines two hard drives so that all data is copied concurrently across the array members that the RAID 1 volume resides on. In other words, the data is mirrored across the hard drives of the RAID 1 volume. This creates real-time redundancy of all data on the first drive, also called a mirror. RAID 1 is usually used in workstations and servers where data protection is important.

The RAID 1 volume appears as a single physical hard drive with a capacity equal to that of the smaller hard drive.

**RAID 5 (striping with parity)**

RAID level 5 combines three or four hard drives so that all data is divided into manageable blocks called strips. RAID 5 also stores parity, a mathematical method for recreating lost data on a single drive, which increases fault tolerance. The data and parity are striped across the array members. The parity is striped in a rotating sequence across the members.

Because of the parity striping, it is possible to rebuild the data after replacing a failed hard drive with a new drive. However, the extra work of calculating the missing data will degrade the write performance to the volumes. RAID 5 performs better for smaller I/O functions than larger sequential files.

RAID 5, when enabled with volume write-back cache with Coalescer, will enhance write performance. This combines multiple write requests from the host into larger more efficient requests, resulting in full stripe writes from the cache to the RAID5 volume.

RAID 5 volume provides the capacity of $(N-1) * \text{smallest size of the hard drives}$, where $N \geq 3$ and ≤ 4 .

For example, a 3-drive RAID 5 will provide capacity twice the size of the smallest drive. The remaining space will be used for parity information.

RAID 10 (striping and mirroring)

RAID level 10 uses four hard drives to create a combination of RAID levels 0 and 1. The data is striped across a two-disk array forming a RAID 0 component. Each of the drives in the RAID 0 array is mirrored to form a RAID 1 component. This provides the performance benefits of RAID 0 and the redundancy of RAID 1.

The RAID 10 volume appears as a single physical hard drive with a capacity equal to two drives of the four drive configuration (the minimum RAID 10 configuration). The space on the remaining two drives will be used for mirroring.

2.2 Typical usage model for RAID levels

RAID 0

This provides end-users the performance necessary for any disk-intensive applications; these include video production and editing, image editing, and gaming applications.

RAID 1

This provides end-users with data redundancy by mirroring data between the hard drives.

RAID 5

This provides end-users with good performance and data redundancy by striping data and parity across all the hard drives. The write performance is enhanced with volume write-back cache.



RAID 10

This provides end-users with the benefits of RAID 0 (performance) and RAID 1 (data mirroring).



3 **Intel® Matrix Storage Technology**

The Intel Matrix Storage Technology contains three core components:

- Intel® Matrix Storage Manager 7.6 software
- Intel® Matrix Storage Manager option ROM
- Intel® RAID Configuration utility

3.1 **Intel® Matrix Storage Manager 7.6**

The Intel® Matrix Storage Manager 7.6 is the major software component of the Intel Matrix Storage Technology. It provides the Intel Matrix Storage Manager driver that supports RAID for Windows XP and provides the Intel® Matrix Storage Console (a 32-bit Windows application). The driver supports the Intel® 82801IR/IO Serial ATA RAID Controller and will recognize its unique device ID and sub-class code. Because of this, the driver must be installed before the Windows operating system is installed onto a RAID volume or a single SATA hard drive connected to the RAID controller. The driver, in conjunction with the Intel Matrix Storage Manager option ROM, will provide boot support for a two to four drive RAID array. The driver, with the Intel Matrix Storage Console, provides RAID volume management (create, delete, migrate) within the Windows operating system. It also displays SATA* device and RAID volume information.

3.2 **Intel® Matrix Storage Manager Option ROM**

The Intel Matrix Storage Manager option ROM is a standard Plug and Play option ROM that adds the Int13h services and provides a pre-OS user interface for the Intel Matrix Storage Technology solution. The Int13h services allow a RAID volume to be used as a boot hard drive. They also detect any faults in the RAID volume being managed by the RAID controller. The Int13h services are active until the RAID driver takes over after the operating system is loaded.

The Intel Matrix Storage Manager option ROM expects a BIOS Boot Specification (BBS) compliant BIOS. It exports multiple Plug and Play headers for each non-RAID hard drive or RAID volume, which allows the boot order to be selected from the BIOS's setup utility. When the system BIOS detects the RAID controller, the *RAID option ROM* code should be executed.

The Intel Matrix Storage Manager option ROM is delivered as a single uncompressed binary image compiled for the 16-bit real mode environment. To conserve system flash space, the integrator may compress the image for inclusion into the BIOS. The uncompressed option ROM image will be less than 64 KB in size. The run-time image that resides in BIOS compatibility space will be less than 20 KB in size and consumes no more than 12 KB of system memory. System memory is taken from conventional DOS memory and is not returned.



3.3 Intel RAID Configuration Utility

The Intel RAID Configuration utility is an executable with capabilities similar to the Intel Matrix Storage Manager option ROM. It can operate in 16-bit MS-DOS* mode or in Windows operating system. It provides customers with the ability to create, delete, and manage RAID volumes on a system within a DOS environment. For ease of use, the utility has command line parameters that make it possible to perform these functions by using DOS scripts or shell commands.

The RAID Configuration utility has two main modes. The first one uses command line parameters. Below is a snapshot of the help text displayed when using the -? flag. It shows the usage for all supported command line flags necessary for creating, deleting, and managing RAID volumes.

The second mode of operation is console mode (applicable for RAIDCfgr only). If this utility is executed without any command line flags, a console interface identical to that of the Intel Matrix Storage Manager option ROM is presented and is fully functional within the DOS environment. The mode requires user interaction; however, it may be used to create, delete, and manage RAID volumes from a DOS environment when the Intel Matrix Storage Manager option ROM is unavailable.

3.3.1 RAIDCfgr Utility for MS-DOS*

The command syntax for the Intel RAID Configuration utility is shown below:

```
=====
RaidCfg.exe [/?] [/Y] [/Q] [/C:vol_name] [/SS:strip_size] [/L:raid_level]
           [/S:vol_size] [/DS:disk_ports] [/D:vol_name] [/X] [/I] [/P]
           [/ST] [/STD] [/STV] [/F:vol_name] [CnG:vol_name] [/Sync]

/?      Displays Help Screen.  Other options ignored.
/Y      Suppress any user input.  Used with options /C, /D, /X, & /F.

/Q      Quiet mode / No output.  Should not be used with status commands.
COMMANDS - Only one at a time.
/C      Create a volume with the specified name.
        /S, /DS, /SS, & /L can be specified along with /C.
/SS     Specify strip size in KB.  Only valid with /C
/L      Specify RAID Level (0, 1, 10, or 5).  Only valid with /C
/S      Specify volume size in GB or percentage if a '%' is appended.
        Percentage must be between 1-100.  Only valid with /C
/DS     Selects the disks to be used in the creation of volume.
        List should be delimited by spaces.
/D      Delete Volume with specified name.
/X      Remove all metadata from all disks.  Use with /DS to delete
        metadata from selected disks.
/I      Display All Drive/Volume/Array Information.  /P can be specified.
/P      Pause display between sections.  Only valid with /I.
/ST     Display Volume/RAID/Disk Status.
/STD    Display delimited Disk Status
        Port,Model,SerialNumber,FirmwareVersion,Array,Status,Size,Free,Type
/STV    Display delimited Volume Status
        Index,Level,StripSize,Size,Status,Bootable,Array,Name
/F      Repair failed RAID0 Volume.
/CnG    Create a Intel® Rapid Recover Technology volume.  To be used with /C
        and /DS.
/Sync   Set sync type for Intel® Rapid Recover Technology volume.  Only valid
        with /CnG
```



```
/M    Choose port number of the Master disk for Intel® Rapid Recover  
       Technology volume. Only valid with /CnG
```

```
=====
```

3.3.2 RAIDCf32 Utility for Microsoft® Windows®

The command syntax for the Intel RAID Configuration utility is shown below:

```
=====
RaidCf32.exe [/?] [/Y] [/Q] [/RD] [/SPARE:drive] [/C:vol_name]
              [/SS:strip_size] [/L:raid_level] [/S:vol_size]
              [/DS:disk_ports] [/D:vol_name] [/X] [/I] [/P] [/ST]
              [/STD] [/STV] [/F:vol_name] [CnG:vol_name] [/Sync] [/M:port]

/?          Displays Help Screen. Other options ignored.
/Y          Suppress any user input. Used with options /C, /D, /X, & /F.
/Q          Quiet mode / No output. Should not be used with status commands.
            COMMANDS - Only one at a time.
/RD         Inquire if the raid driver is running
/SPARE      Set a drive to be a spare
/C          Create a volume with the specified name.
            /S, /DS, /SS, & /L can be specified along with /C.
/SS         Specify strip size in KB. Only valid with /C
/L          Specify RAID Level (0, 1, 10, or 5). Only valid with /C
/S          Specify volume size in GB or percentage if a '%' is appended.
            Percentage must be between 1-100. Only valid with /C
/DS         Selects the disks to be used in the creation of volume.
            List should be delimited by spaces.
/D          Delete Volume with specified name.
/X          Remove all metadata from all disks. Use with /DS to delete
            metadata from selected disks.
/I          Display All Drive/Volume/Array Information. /P can be specified.
/P          Pause display between sections. Only valid with /I.
/ST         Display Volume/RAID/Disk Status.
/STD        Display delimited Disk Status
            Port,Model,SerialNumber,FirmwareVersion,Array,Status,Size,Free,Type
/STV        Display delimited Volume Status
            Index,Level,StripSize,Size,Status,Bootable,Array,Name
/F          Repair failed RAID0 Volume.
/CnG        Create a Intel® Rapid Recover Technology volume. To be used with /C
            and /DS.
/Sync       Set sync type for Intel® Rapid Recover Technology volume. Only
            valid with /CnG
/M          Choose port number of the Master disk for Intel® Rapid Recover
            Technology volume. Only valid with /CnG
=====
```



4 *Creating a RAID Volume*

RAID volumes can be created three different ways. The method most widely used by end-users is to use the Intel Matrix Storage Console in Windows*. The second method to create a RAID volume is to use the Intel Matrix Storage Manager option ROM user interface. The third way, used by OEMs only, is using the RAID Configuration utility.

4.1 **Using the Intel Matrix Storage Console**

1. Run the Intel Matrix Storage Console from the following Start menu link within Windows XP:
Start→Programs→Intel® Matrix Storage Manager→Intel Matrix Storage Console
2. Select 'Create RAID Volume' from the Actions menu. This will launch the Create RAID Volume Wizard. Follow the instructions as prompted. It's important to understand what will occur during the migration process because all data on the destination hard drive will be lost.
3. After the RAID volume is created, you will be shown a dialog box stating that the RAID volume was successfully created. Click OK to close this dialog box.
4. After the RAID volume is created, you will need to use Windows Disk Management or other third-party software to create a partition within the RAID volume and format the partition.
5. After formatting the partition, you may begin to copy files to, or install software on, the RAID volume.

4.2 **Using the Intel Matrix Storage Manager option ROM User Interface**

1. Upon re-boot, you will see the option ROM status message on the screen – press CTRL-I to enter the Intel Matrix Storage Manager option ROM user interface.
2. In the Main Menu, select option #1 'Create RAID Volume'. Enter the name you want to use for the RAID volume, then press Enter.
3. Select the RAID level by using the arrow keys, then press Enter.
4. Press Enter to select the disks to be used by the array that the volume will be created on. Press Enter when done.
5. Select the strip size (128 KB is the default for RAID 0) by using the arrow keys, then press Enter when done.
6. Enter the size for the RAID volume in gigabytes. The default value will be the maximum size. If you specify a smaller size, you will be able to create a second volume in the remaining space using the same procedure.
7. After this is done, exit the Option ROM user interface.



4.3 Using the RAID Configuration Utility

Run “raidcfg.exe” (DOS environment) or “raidcfg32.exe” (Windows environment) with the following command line flags to create a RAID volume.

The following command line will instruct the utility to create a RAID 0 volume named “OEMRAID0” on the hard drives on Port 0 and 1 with a strip size of 128 KB and a size of 120 GB:

```
C:\>raidcfg.exe /C:OEMRAID0 /DS:0 1 /SS:128 /L:0 /S:120
```

The following command will create a RAID volume using all of the default values. It will create a RAID 0 volume with a strip size of 128 KB on the two hard drives in the system. The volume will be the maximum size allowable.

```
C:\>raidcfg.exe /C:OEMRAID0
```

The following command line will display usage for all support command line parameters:

```
C:\>raidcfg.exe /?
```

Note:

Selecting the strip size is only applicable for RAID 0, RAID 5, RAID 10 levels, but not for RAID 1.



5 *Deleting a RAID Volume*

RAID volumes can be deleted in three different ways. The method most widely used by end-users is the Windows user interface utility. The second method is to use the Intel Matrix Storage Manager option ROM user interface. The third way, used by OEMs only, uses the RAID Configuration utility.

5.1 **Using the Windows User Interface Utility**

1. Run the Intel Matrix Storage Console from the following Start menu link within Windows XP:
Start→All Programs→Intel® Matrix Storage Manager→Intel Matrix Storage Console
2. Right-click the RAID volume and select 'Delete Volume'
3. The 'Delete RAID Volume' Wizard will walk you through the steps to delete the volume.

5.2 **Using the Option ROM User Interface**

1. Upon re-boot, you will see the Intel Matrix Storage Manager option ROM status message on the screen – press CTRL-I to enter the option ROM user interface.
2. Within this UI, select option #2 'Delete RAID volume'.
3. You should be presented with another screen listing the existing RAID volume.
4. Select the RAID volume you wish to delete using the up and down arrow keys.
5. Press the Delete key to delete the RAID volume
6. Press Y to confirm.

Note: Option #3 'Reset Hard Drives to Non-RAID' in the option ROM user interface may also be used to delete a RAID volume. This resets one or more SATA hard drives to non-RAID status, by deleting all metadata on the hard drives. This has the affect of deleting any RAID volumes present. This function is provided for re-setting the hard drives when there is a mismatch in RAID volume information on the hard drives. The option #2 'Delete RAID Volume' on the contrary, will allow deleting a volume at a time, while retaining the existing RAID array metadata (for instance Matrix RAID).



5.3 Using the RAID Configuration Utility

Run “raidcfg.exe” (DOS environment) or “raidcfg32.exe” (Windows environment) with the following command line flag to delete a RAID volume. The following command line will instruct the utility to delete a RAID 0 volume named “OEMRAID0”

```
C:\>raidcfg.exe /D:OEMRAID0
```

The following command line will display usage for all support command line parameters:

```
C:\>raidcfg.exe /?
```




6 Common RAID Setup Procedures

6.1 Build a SATA RAID 0, 1, 5 or 10 System

This is the most common setup. This configuration will have the operating system striped for RAID 0, or mirrored for RAID 1, or striped with parity for RAID 5, or striped and mirrored for RAID 10 across two or up to four SATA hard drives. To prepare for this, you must have the Intel RAID driver on a floppy disk. See the procedure for creating this floppy in section 7.3 of this document.

1. Assemble the system using a motherboard that supports Intel Matrix Storage Technology and attach SATA hard drives depending on the RAID level that will be built.
2. Enter System BIOS Setup and ensure that RAID mode is enabled. This setting may be different for each motherboard manufacturer. Consult the manufacturer's user manual if necessary. When done, exit Setup.
3. Upon re-boot you will see the Option ROM status message on the screen – press CTRL-I to enter the Intel Matrix Storage Manager Option ROM user interface.
4. Within this UI, select option '1. Create RAID Volume'. When 'Create RAID Volume' menu is displayed, fill the following items:
 - a. Name: Enter a volume name, and press Enter to proceed to next menu item,
 - b. RAID Level: select RAID level (0, 1, 5, 10), and press Enter to proceed to next menu item;
 - c. Disks: press Enter on 'Select Disks' to select the hard drives to be used for your configuration.
 - d. Within the 'SELECT DISKS' window, choose the hard drives and press Enter to return to the 'MAIN MENU'.
 - e. Strip Size: Applicable for RAID levels 0, 5, and 10 only. You may choose the default size or another supported size in the list and press Enter to proceed to the next item.
 - f. Capacity: The default size would be the maximum allowable size summation of all the drives in your configuration. You may decrease this volume size to a lower value. If you specified a lower capacity size volume, the remaining space could be utilized for creating another RAID volume. Press Enter to proceed to the next item.
 - g. Create Volume: Press Enter to Create a volume.
 - h. Press 'Y' to confirm the creation of volume.
5. After this is done, exit the Intel Matrix Storage Manager option ROM user interface by pressing the Esc key or Option #4.
6. Begin Windows XP Setup by booting from the installation CD.
7. At the beginning of Windows Setup, press F6 to install a third-party SCSI* or RAID driver. When prompted, insert a floppy disk containing the Intel RAID driver. After reading the floppy



disk, the 'Intel® ICH9 I/O Controller with RAID /RAID 5' selection will be presented -- select this driver to install.

8. Finish the Windows installation and install all necessary drivers.
9. Install the Intel Matrix Storage Manager 7.6 software via the CD-ROM included with your motherboard or download the software from Intel's website on the Internet. This will add the *Intel Matrix Storage Console* that can be used to manage the RAID configuration.

6.2 Build a SATA “RAID Ready” System

The following steps outline how to build an Intel “RAID Ready” system with Windows XP installed on a single SATA hard drive. A “RAID Ready” system can be upgraded to RAID 0, RAID 1, RAID5 or RAID 10 at a later time using the RAID migration feature built into Intel Matrix Storage Manager 7.6. This technology enables you to install additional SATA hard drives, and then migrate to a RAID level volume without re-installing the operating system.

1. Assemble the system using a motherboard that supports Intel Matrix Storage Technology and attach one SATA hard drive.
2. Enter System BIOS Setup; ensure that RAID mode is enabled. This setting may be different for each motherboard manufacturer. Consult your manufacturer's user manual if necessary. When done, exit Setup.
3. Begin Windows Setup by booting from the installation CD.
4. At the beginning of Windows Setup, press F6 to install a third-party SCSI or RAID driver. When prompted, insert a floppy disk containing the Intel RAID driver. After reading the floppy disk, the 'Intel® 82801IR/IO SATA RAID Controller' selection will be presented -- select this driver to install.
5. Finish the Windows installation and install all necessary drivers.
6. Install the Intel Matrix Storage Manager software via the CD-ROM included with your motherboard or after downloading it from Intel's website on the Internet. This will add the *Intel Matrix Storage Console* that can be used to manage the RAID configuration and to use the Intel Matrix Storage Manager migration feature to migrate a “RAID Ready” configuration to a RAID 0, RAID 1, RAID 5, RAID 10 configuration.

6.3 Migrate to RAID 0 or RAID 1 on an Existing “RAID Ready” System

If you have an existing “RAID Ready” system as defined in section 6.2, then you can use the following steps to migrate from a single-drive non-RAID configuration to a two drive RAID 0 or RAID 1 configuration. The resulting configuration will be identical to that created by the procedure in section 6.1. To prepare for this, you will need to install another SATA hard drive with a capacity equal to or greater than the capacity of the hard drive being used as the source hard drive.

1. Note the serial number of the hard drive already in the system; you will use this to select it as the source hard drive for the migration.
2. Install the second SATA hard drive on the available SATA port.



3. Boot Windows, then install the Intel Matrix Storage Manager software, if not already installed, using the setup package obtained from a CD-ROM or from the Internet. This will install the necessary Intel Matrix Storage Console and start menu links.
4. Open the Intel Matrix Storage Manager from the Start Menu and select 'Create RAID volume from Existing Hard Drive' from the Actions menu.
5. The 'Create RAID volume from Existing Hard Drive' Wizard will be activated. Follow the instructions as prompted. It is important to understand what will occur during the migration process because all data on the destination hard drive will be lost.
6. After the migration is complete, reboot the system. If you migrated to a RAID 0 volume, use Disk Management from within Windows in order to partition and format the empty space created when the two hard drive capacities are combined. You may also use third-party software to extend any existing partitions within the RAID volume.

6.4 Migrate an Existing Data Hard Drive to a RAID 0 or RAID 1 Volume

If you are booting from a parallel ATA (PATA*) drive that contains the operating system, you may use the Intel Matrix Storage Manager to create a RAID 0 or RAID 1 volume on two SATA drives. Also, if you have a single SATA hard drive that contains program or personal data, you may use the migration feature to use this hard drive as the source hard drive for a migration. After the migration is completed, you will have a two hard drive RAID 0 volume where data is striped or a two hard drive RAID 1 volume where the data is mirrored across the two SATA hard drives. To do this, the ICH9 I/O Controller must be enabled in the BIOS and you must have the Intel Matrix Storage Manager software installed.

Begin with a system where you are booting Windows* XP* from a PATA hard drive. Make sure the ICH8 I/O controller is enabled and the Intel Matrix Storage Manager software is installed. Then do the following:

1. Note the serial number of the SATA hard drive that is already installed. You will use this to select it as the source hard drive when initiating the migration.
2. Physically attach the second SATA hard drive to the available SATA port.
3. Boot to Windows, install the Intel Matrix Storage Manager software, if not already installed, using the setup package obtained from a CD-ROM or from the Internet. This will install the necessary Intel Matrix Storage Console and start menu links.
4. Open the Intel Matrix Storage Console from the Start Menu.
5. Select 'Create RAID volume from Existing Hard Drive' from the Actions menu. This will activate the Create RAID volume from the Existing Hard Drive Wizard. Follow the instructions as prompted. It is important to understand what will occur during the migration process because all data on the destination hard drive will be lost.
6. After the migration is complete, reboot the system.



6.5 Migrate from RAID 0/1/10 to RAID 5 system

RAID level migration allows an existing RAID configuration which could support levels 0, 1, or 10 to be migrated to RAID level 5. The following migrations are possible:

- 2-drive RAID 1 to 3- or 4-drive RAID 5
- 2-drive RAID 0 to 3- or 4-drive RAID 5
- 3-drive RAID 0 to 4-drive RAID 5
- 4-drive RAID 10 to 4-drive RAID 5

Note: In order for the migration to complete successfully, the minimum required SATA hard drives for the new RAID level 5 have to be met.

Please follow the procedure illustrated below:

1. Power on the system to Windows which supports RAID levels 0, 1, 10.
2. Start the Intel Matrix Storage Console application:
Start Menu -> All Programs -> Intel Matrix Storage Manager -> Intel Matrix Storage Console
3. Click the View menu and select 'Advanced Mode' option.
4. Choose the RAID volume you want to migrate. Right Click and select 'Modify Volume'
5. 'Modify RAID Volume Wizard' will be displayed. The wizard will walk you through the procedure to migrate to RAID 5.
6. After the migration starts, the Information tab shows the migration progress in the Status field.
7. When the Status field indicates 'Normal', the migration is complete.

6.6 Create a RAID volume on SATA While Booting to PATA

This configuration is for users who would like to use a RAID 0 volume as a high performance data hard drive or use the data redundancy properties of RAID 1. Starting with a configuration where the system is booting to a Windows XP, with installation on a Parallel ATA hard drive, the user can add two SATA hard drives and create a RAID volume on them.

1. Physically install two SATA hard drives to the system.
2. Enter System BIOS Setup; ensure that RAID mode is enabled. This setting may be different for each motherboard manufacturer. Consult your manufacturer's user manual if necessary. When done, exit Setup.



3. Boot to Windows; install the Intel Matrix Storage Manager software, if not already installed, use the setup package obtained from a CD-ROM or from the Internet. This will install the necessary Intel Matrix Storage Console and Start menu links.
4. Use the Intel Matrix Storage Console to create a RAID 0 volume on two SATA drives according to the procedure in section 6.1 of this document.
5. After the RAID volume is created, you will need to use Windows Disk Management or other third-party software to create a partition within the RAID volume and format the partition. At this point, you may begin to copy files to, or install software on, the RAID volume.



6.7 Build a RAID 0 or RAID 1 System in an Automated Factory Environment

This is a two-part process. First, create the master image of the Windows installation; you will load these on the system before they are delivered to the customer. The second part is to apply this image to a system that has two SATA hard drives installed with a RAID 0 or RAID 1 volume. This procedure will apply the image to the RAID volume so that the system may boot from it and the operating system will be fully striped by the RAID 0 volume or mirrored by the RAID 1 volume. The same procedure, and master image, could be applied to a single SATA hard drive to create a “RAID Ready” system.

6.7.1 Part 1: Create the Master Image

1. Build a RAID 0 or RAID 1 System as described in section 6.1 of this document.
2. Install the *Intel Matrix Storage Manager 7.6* software from the CD-ROM included with your motherboard or after downloading it from the Internet. This will add the *Intel Matrix Storage Console* that can be used to manage the RAID configuration in Windows*.
3. Use third-party software to create an image of the RAID volume as if it were a physical hard drive or create an image of the partition within the RAID volume containing the operating system, program and data files.
4. Store it in a place where it can be accessed by systems on the assembly line.

6.7.2 Part 2: Apply the Master Image

1. Assemble the system using a motherboard that supports Intel Matrix Storage Technology and attach two SATA hard drives.
2. Enter System BIOS Setup; ensure that RAID mode is enabled. This setting may be different for each motherboard manufacturer. Consult your manufacturer’s user manual if necessary. When done, exit Setup.
3. Within a DOS environment, use the Intel RAID Configuration utility (raidcfg.exe) to create a RAID volume. The following command line will instruct the utility to create a RAID 0 volume named “OEMRAID0” on the hard drives on Port 0 and 1 with a strip size of 128 KB and a size of 120GB:

```
C:\>raidcfg.exe /C:OEMRAID0 /DS:0 1 /SS:128 /L:0 /S:120
```

The following command line will display all supported command line parameters and their usage:

```
C:\>raidcfg.exe /?
```

4. The system does not need to be rebooted before moving on to the next step. If there are no PATA hard drives in the system, the RAID volume created will become the boot device upon reboot.



5. Use third-party software to apply the image created in Part 1 to the RAID volume you created in Part 2.



7 RAID Volume Data Verification and Repair Feature

This feature is available starting with Intel® Matrix Storage Manager 6.1.

7.1 Verify RAID Volume Feature

Once you create a RAID volume, it will be listed in the device pane and you will be able to access the following volume management options by right-clicking on its name

The RAID volume verification feature identifies any inconsistencies or bad data on a RAID 0, RAID 1, RAID 5, or RAID 10 volume and reports the number of inconsistencies or number of blocks with media errors found during RAID volume data verification.

When the verification process is complete, a dialog will appear that displays the number of verification errors and blocks with media errors that were found.

Follow the below steps to start RAID volume data verification

1. Go to the Advanced mode.
2. Right-click on the name of the volume whose data you wish to verify.
3. Click on Verify Volume Data

7.2 Using Verify and Repair RAID Volume Feature

Once you create a RAID volume, it will be listed in the device pane and you will be able to access the following volume management options by right-clicking on its name

The RAID volume verification and Repair feature identifies and repairs any inconsistencies or bad data on a RAID 1, RAID 5, or RAID 10 volume.

This option verifies and repairs the data on a RAID volume. When the verification and repair process is complete, a dialog will appear that displays the number of verification errors found and repaired and the number of blocks with media errors that were reassigned.

Follow the below steps to start RAID volume data verification and repair

4. Go to the Advanced mode.
5. Right-click on the name of the volume whose data you wish to verify.
6. Click on Verify and Repair Volume Data.



8 *Intel[®] Rapid Recover Technology*

Intel[®] Rapid Recover Technology is supported on platforms with ICH8M-E and ICH9R/IO. This technology utilizes RAID 1 (mirroring) functionality to copy data from a designated master drive to a designated recovery drive. The master and recovery drives must span 100% of the available hard drive space of an array, and only one recovery volume can be present on a system. You can select whether you want the master drive data to be copied to the recovery drive continuously or on request. When using the continuous update policy, changes made to the data on the master drive while the system is not docked are automatically copied to the recovery drive when the system is re-docked. When using the Update on request policy, the master drive data can be restored to a previous state by copying the data on the recovery drive back to the master drive.

Advantages: More control over how data is copied between master and recovery drives; fast volume updates (only changes to the master drive since the last update are copied to the recovery drive); member hard drive data can be viewed in Windows* Explorer.

Disadvantage: No increase in volume capacity.

Applications: Critical data protection for mobile systems; fast restoration of the master drive to a previous or default state.

Creating a Recovery Volume

A Recovery volume consists of two disks – a primary disk and a recovery disk.

A Recovery volume can be created through the RAID Option ROM or through Intel[®] Matrix Storage Manager Console application.

Follow the below steps to create a Recovery volume through the OROM

1. Enter the OROM by pressing the Ctrl and I keys early during system POST.
2. Under the 'Create RAID' volume option, select the option to create a Recovery volume.
3. Select the Primary disk and the Recovery disk.

Note: The Primary disk size must be less than or equal to the Recovery disk size.

OROM Recovery menu provides the following options

1. Disable Continuous Update
2. Boot from Recovery Disk
3. Boot from Master Disk

To create a Recovery volume through the Matrix Storage Console, the system needs to be configured in RAID mode with 2 drives. Boot the system and open the Matrix Storage Console application. A Recovery volume can be created through the Basic mode or through the Advanced mode.

Follow the below steps to create a Recovery Volume through the Basic mode



1. Click on 'Protect data using Intel® Rapid Recover Technology'.
2. Click on 'Create a Recovery Volum'.
3. A dialog box will pop up. Selecting 'Yes' will start the volume creating process which can be monitored on the progress bar.

Follow the below steps to create a Recovery volume through the Advanced mode

1. Go to the Advanced mode screen.
2. Click on the 'Action' menu in the menu bar.
3. Click on 'Create a Recovery Volume'.
4. Select the Primary disk and the Recovery disk
5. Select the Update policy – 'Continuous Update' or 'Update on request'.
6. Select 'Finish' to complete the creation of the Recovery volume.

The system will synchronize the Primary with the Recovery disk once after the creation of the Recovery volume.

There are two modes of updating or synchronizing the Recovery disk with the Primary disk – either continuous update or manual update.

To change from Continuous update mode to Update on request mode, select the Advanced mode, right-click on the Recovery volume and select Disable Continuous Update.

Follow the below steps to change from Update on request mode to Continuous update mode:

1. Right-click on the 'Recovery volume' and select 'Modify Volume'.
2. Click 'Next' on the Modify Recovery Volume Wizard dialog box.
3. On the next screen, select 'Continuous update'.
4. Select 'Next' and then 'Finish' to complete the operation.

Follow the below steps to mount the Recovery disk

Note: Mounting the Recovery disk will result in displaying the Recovery disk in Windows file explorer. The disk contents will be write protected to preserve data integrity with primary disk.

1. Make sure that the Recovery volume is in 'Update upon request' mode.
2. Then right-click on the Recovery volume name and select 'Access Recovery Drive Files'.
3. Click 'OK' on the information dialog box. The Recovery disk will now be mounted and can be seen through Windows Explorer.

Follow the below steps to un-mount the Recovery disk

1. In the Advanced mode, right-click on the Recovery volume name.
2. Select 'Access Recovery Drive Files'.



3. Select 'OK' on the information dialog box.

The recovery disk shall then become un-mounted and reappear in Intel® Matrix Storage Manager Console.



9 *Pre-Installation of the Intel[®] Matrix Storage Manager Driver*

The Intel Matrix Storage Manager driver must be installed before installing Windows XP on a RAID volume or when in AHCI mode. The Intel Matrix Storage Manager driver must be installed before installing Windows Vista on a RAID volume or when in AHCI mode. Intel Matrix Storage Manager AHCI driver can be installed over Vista's native AHCI driver.

9.1 *Pre-Installation Using the “F6” Method*

1. When you start installing Windows XP and older operating systems, you may encounter a message stating, “Setup could not determine the type of one or more mass storage devices installed in your system”. If this is the case, then you are already in the right place and are ready to supply the driver. If this is not the case, then press F6 when prompted at the beginning of Windows setup.
2. Press the ‘S’ key to select ‘Specify Additional Device’.
3. You should be prompted to insert a floppy disk containing the manufacturer-supplied driver into the A: drive. This disk should contain the driver which includes:
Note: For Windows Vista you can use Floppy, CD/DVD or USB.
 - a. Driver binary (iastor.sys),
 - b. INF files (iastor.inf and iaAhci.inf),
 - c. cat files (iaStor.cat and iaAhci.cat) and
 - d. TxtSetup OEM file (txtsetup.oem).

These should be in the root directory of the floppy. See Section 7.3 for instructions on making a driver installation disk.

4. For Windows Vista:

During the Operating system installation, after selecting the location to install Vista click on ‘Load Driver’ button to install a third party SCSI or RAID driver.

5. When prompted, insert the floppy disk or media (Floppy, CD/DVD Or USB) you created in step 3 and press Enter.
6. You should be shown a list of available SCSI Adapters. This list should include “Intel(R) 82801HEM SATA RAID Controller(ICH8M-E)” when the system is in RAID mode and “Intel(R) 82801HEM SATA AHCI Controller(ICH8M-E) or Intel(R) 82801HBM SATA AHCI Controller(ICH8M)” when the system is in AHCI mode.
7. Select the appropriate Intel RAID controller and press ENTER.



8. The next screen should confirm that you have selected the Intel® RAID controller. Press ENTER again to continue.
9. You have successfully installed the Intel® Matrix Storage Manager driver, and Windows setup should continue.
10. Leave the disk in the floppy drive until the system reboots itself. Windows setup will need to copy the files from the floppy again after the RAID volume is formatted, and Windows setup starts copying files.



9.2 Unattended Installations of Microsoft Windows XP

To install the driver as outlined in the Microsoft document, "Deployment Guide Automating Windows NT* Setup" use the TXTSETUP.OEM file included in this package and insert the lines below into the UNATTEND.TXT file. This method is also available for Microsoft Windows XP operating system. For Windows XP, extract the iaStor.inf, iaAhci.inf, iaStor.sys, iaStor.cat, iaAhci.cat, and Txtsetup.oem files according to the method described in section 7.3.

For Microsoft Windows XP, insert the following text into the UNATTEND.TXT file:

For system in RAID mode:

```
[MassStorageDrivers]
"Intel® 82801IR/IO SATA RAID Controller (ICH9R/IO)" = OEM
[OEMBootFiles]
iaStor.inf
iaStor.sys
iaStor.cat
Txtsetup.oem
```

For systems in AHCI Mode:

```
[MassStorageDrivers]
"Intel® 82801IR/IO SATA AHCI Controller (ICH9R/IO)" = OEM
[OEMBootFiles]
iaAhci.inf
iaStor.sys
iaAhci.cat
Txtsetup.oem
```



9.3 Creating a Floppy Disk containing the Intel Matrix Storage Manager Driver

This procedure should be used to create a floppy disk containing the Intel Matrix Storage Manager driver for use in installing the driver using the “F6 method” described in section 7.1.

9.3.1 Method 1 – Using Install applications

1. On a system running Microsoft Windows, download the Intel Matrix Storage Manager package or obtain it from your Intel representative. The package contains the following files:
 - a. iata_enu.exe (English only executable)
 - b. iata_enu.zip (English only zip package)
 - c. iata_cd.exe (Multi-language executable)
 - d. iata_cd.zip (Multi-language zip package)
2. For convenience copy the above files into the C:\ drive.
3. Insert a blank, formatted floppy disk into the A: drive.
4. Unpack the iata_enu.zip or iata_cd.zip files. The setup.exe will be located in path “..\iATA_ENU\Disk1” for English version.
5. Choose the language in which you want the driver to be supported and execute the commands described below. From Windows command prompt, type the following commands:
 - a. Using Setup.exe – English version:
`C:\>setup.exe -a -p c:\IAAdriver`
 - b. Using iata_enu.exe - English version (Alternate Method):
`C:\>iata_enu.exe -a -a -p c:\IAAdriver`
 - c. Using iata_cd - Multi-language version:
`C:\>iata_cd.exe -a -a -p c:\IAAdriver`

**Where C:\IAAdriver is an already existing folder on the c: drive
6. After this is done, copy the driver binary files, INF files and the txtsetup.oem file from the local directory C:\IAAdriver\Driver to the root directory of the floppy.



9.3.2 Method 2: Using F6 application

1. On system running Windows, download the application f6flpy32.exe for 32-bit operating system or f6flpy64.exe for 64-bit operating system to your local drive.
2. Double click on the application. A dialog box prompting you to 'Insert floppy to write' will show-up.
3. Insert a blank floppy into floppy drive and click "OK" to proceed.
4. The application will perform the following tasks:
 - a. Formatting of the disk
 - b. Writing data into the disk
 - c. Verification of the validity of data in the disk.
5. After the task is done, the "About Self-Extractor for WinImage" will be displayed. Click "OK" to exit.
6. Now your floppy disk will have the valid Intel Matrix Storage Manager Driver which can be used for F6 method.



10 *Determining the Version of the Software Components*

10.1 Determining the Version of the RAID Driver

There are two ways to do this. The first is to use the Intel Matrix Storage Console. It reports the current version of the driver installed. The second is to locate the driver (iaStor.sys) itself and view its properties.

10.1.1 Using the Intel Matrix Storage Console

1. Run the Intel Matrix Storage Console from the following Start Menu path:

Start→All Programs→Intel® Matrix Storage Manager→Intel Matrix Storage Console
2. Select 'System Report' from the View menu. 'System Report' will be displayed.
3. Choose Intel® RAID Technology tab. Look for a parameter labeled "Driver Version". It should have a number in the following format:

7.6.0.xxxx
4. This is the current version of the user interface utility installed on your system. The 7.6.0 portion is the product release number; the xxxx portion is the build number.

10.1.2 Using the Intel Matrix Storage Manager File Properties

1. Locate the file "iaStor.sys" within the following path:

<System Root>\Windows\System32\Drivers
2. Right Click on "iaStor.sys" and select Properties
3. Select the "Version" tab
4. At the top of this tab, there should be a parameter called "File version". Next to it is the version of the driver currently installed on your system. It should have the same format and version as the one you obtained using the Intel Matrix Storage Console.



10.2 Determining the Version of the Option ROM

There are two way to determine the version of the Intel Matrix Storage Manager option ROM integrated into the system BIOS. Use the following procedure to determine the version.

10.2.1 Using the Intel Matrix Storage Console

1. Follow the procedure illustrated in section 8.1.1.
2. Look for the parameter RAID Option ROM.

10.2.2 Using the Intel Matrix Storage Manager Option ROM User Interface

1. Early in system boot-up, during post, or when you see the “Intel® RAID for Serial ATA” status screen output, type CTRL-I. This will open the Option ROM user interface.
2. The following banner will be displayed:

Intel® Matrix Storage Manager option ROM v7.6.0.xxxx ICH8M
3. v7.6.0.xxxx is the version of the Option ROM currently installed on your system. The 7.6.0 portion is the product release number; the xxxx portion is the build number.



11 Uninstallation

Uninstalling the RAID driver could potentially cause an end-user to lose access to important data within a RAID volume. This is because the driver can only provide functionality for the ICH9 I/O controller. Therefore, Intel does not provide a way to permanently remove the driver from the system. However, disabling the SATA RAID Controller causes the operating system to not use the RAID driver.

The uninstallation application that is included with the Intel Matrix Storage Manager software can remove all components except the RAID driver (i.e. it removes the UI application, Start Menu links, Control Panel Applet, etc.).

Use the following procedures to remove the Intel Matrix Storage Manager software or to disable the SATA RAID controller:

11.1 Uninstalling the Intel Matrix Storage Manager Software (except the RAID Driver)

1. Run the Uninstall program from the following start menu link:

Start→All Programs→Intel® Matrix Storage Manager→Uninstall
2. The first dialog box that appears gives you the option of un-installing all components of the Intel Matrix Storage Manager software except the RAID driver. Click OK to do so.
3. The next dialog box is a confirmation that you would like to un-install all components of the software except the RAID driver. Click Yes to confirm.
4. All components of the software will be un-installed except the RAID driver. You should no longer see any Start menu links to the UI application or a control panel applet for Intel Matrix Storage Manager. However, the RAID configuration should still function normally.

11.2 Disabling the RAID Driver by Disabling the RAID Controller

1. Enter System BIOS Setup and disable RAID Mode. This setting may be different for each motherboard manufacturer. Consult your manufacturer's user manual if necessary. When done, exit Setup.
2. Reboot the system. You should no longer see the RAID Option ROM status screen during boot, and you should no longer see the ICH9 I/O controller in Device Manager.
3. At this point, Windows will no longer be using the RAID driver and you will not have Intel RAID functionality. All data contained in existing RAID volumes will no longer be accessible. To re-enable Intel RAID functionality, re-enter System BIOS Setup and re-enable RAID mode.

Uninstall Note: End-users can use this same procedure to disable the SATA RAID Controller if necessary. In fact, the uninstall program used in section 9.1 of this document will display a text file



with a similar procedure. Run the Uninstall Program, click Cancel when presented with the first dialog box, then click Yes at the second dialog box to read the text document containing the procedure.



12 Registry Customizations

After installation of the Intel Matrix Storage Manager, the registry will contain keys to allow customization of several features. The registry key used to customize the Intel Matrix Storage Manager is at the following path:

HKEY_LOCAL_MACHINE/SOFTWARE/Intel/Intel Matrix Storage Manager

12.1 Tray Icon Configuration

The Intel Matrix Storage Manager Tray Icon can be configured for the following behaviors:

12.1.1 User Notification Balloons

This value configures the tray icon balloons for the following behaviors:

“RAIDNotificationIcon”=

Value	Description
0x0 - Disabled	The tray icon will not be shown. The user will not receive notifications using balloons or dialogs.
0x1 – No SMART	The tray icon only shows notification for RAID volume status changes and hard drive failures. SMART event notifications are not shown.
0x2 – Default	The tray icon only appears when a balloon is presented or there is a migration or rebuild occurring. The mode shows all events.
0x3 – Persistent Tray Icon	The tray icon will be shown in the system tray at all times. No other functionality is affected.

12.1.2 User Notification Dialogs

This value configures popup dialogs with the following behavior:

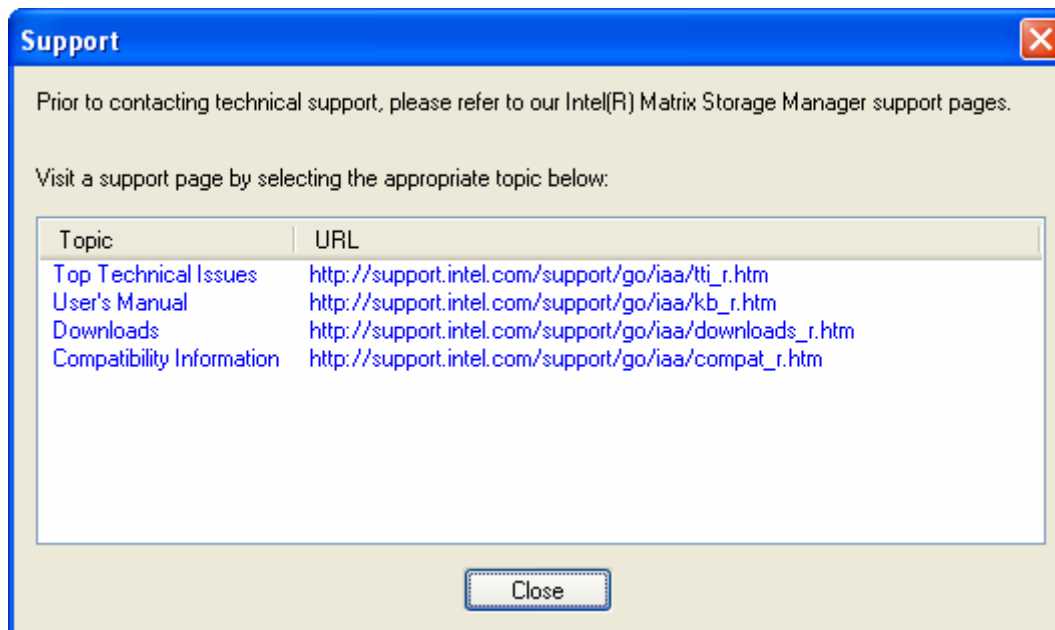
“RAIDNotificationDialogs”=

0x0 – Disabled	This mode does not present any dialogs.
0x2 – Enabled All	This mode presents dialogs for all events



12.1.3 Customize Support URLs in Intel Matrix Storage Console

The Intel Matrix Storage Console Help Menu, Submenu Support when selected will display a pop-up window with the support URLs as shown in the figure below:



These URLs can be changed to be OEM-specific by following the procedure listed below:

Method 1: Manual Registry

1. Run Regedit.exe from command prompt.
2. Select "HKEY_LOCAL_MACHINE\SOFTWARE\Intel\Intel Matrix Storage Console" key.
3. Add STRING values in the following form:
ResourceN REG_SZ myurl
ResourceNURL REG_SZ <http://www.myurl.com>

Where N is any value from 0-49.

Method 2: Using SetupCfg.reg

Edit the setcfg.reg file and append the following lines:

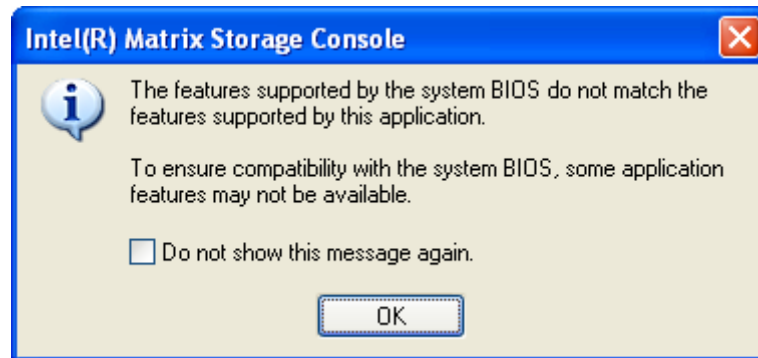
```
[HKEY_LOCAL_MACHINE\SOFTWARE\Intel\Intel Matrix Storage Console]
"Resource0URL"="http://www.xxx.com"
"Resource0"="Test xxx"
"Resource1"="Test yyy"
"Resource1URL"="http://www.yyy.com"
"Resource3"="Test zzz"
```



```
"Resource3URL"="http://www.zzz.com"  
"Resource4"="Test aaa"  
"Resource4URL"="http://www.aaa.com"
```

12.1.4 Disable the pop-up Window with BIOS incompatibility Warning

When a window warning is displayed in Intel Matrix Storage Console, as shown in the figure below, follow the procedure given below if you intend to suppress the warning.



Method 1:

1. Check the “Do not show this message again” box.

Method 2: Registry entry

1. Run `regedit.exe` from the command prompt.
2. Select “HKEY_LOCAL_MACHINE\Software\Intel\Intel Matrix Storage Console” key.
3. Add a new string “PlugInRAID.pin_CompatibilityMsg” with value to enable or disable:

```
"PlugInRAID.pin_CompatibilityMsg"=dword:00000000
```

dword:00000000 – Disable

dword:00000001 - Enable

4. Exit the Regedit application.
5. Open Intel® Matrix Storage Console from Start menu.
6. Confirm the above window is not displayed.





13 *Enabling Link Power Management (LPM) with Intel® Matrix Storage Manager*

Intel® Matrix Storage Manager implements the Link power management(LPM) feature described by the Serial ATA specification to overcome the power demand of a high-speed serial interface, SATA and providing the capability of SATA at the minimum power cost. LPM, when used in conjunction with a SATA hard drive that supports this feature, enables lower power consumption. LPM was initially enabled on mobile platforms starting ICH6M with Intel® Matrix Storage Manager. Starting with ICH9R this feature has also been enabled on desktop platforms with Intel® Matrix Storage Manager 7.6 release. LPM is enabled by default on mobile platforms when Intel® Matrix Storage Manager is installed on the system. On platforms with ICH9R controller hub, LPM is disabled. OEM's who wish to enable LPM on their platforms follow the instructions to enable mentioned in section14.1.

13.1 Instructions to enable LPM

After system is setup with OS and Intel® Matrix Storage Manager installed, follow the below instructions to enable LPM.

1. Go to **Start->Search**
2. Type in **RegEdit** and hit the Enter Key.
3. Go to the below mentioned location to configure the registry keys for LPM
NOTE: OEM's need to configure the LPM settings by port. Ports are numbered starting with zero (please refer the Intel® Matrix Storage Manager PRD for the number of ports supported on each of the platforms)
HKEY_LOCAL_MACHINE\System\CurrentControlSet\Services\iaStor\Parameters\Port0
HKEY_LOCAL_MACHINE\System\CurrentControlSet\Services\iaStor\Parameters\Port1
...
HKEY_LOCAL_MACHINE\System\CurrentControlSet\Services\iaStor\Parameters\Port5
4. Now add the following registry keys under the registry location mentioned in step2, if they are not available (Registry keys can be added by using automated scripts, .reg files, executable utilities, etc). If you find the below registry keys already available, please make sure the default values are as mentioned below. **

```
"LPM"=dword: 00000001 {dword: 00000000->Disable; dword: 00000001->Enable}  
"LPMSTATE"=dword: 00000000 {dword: 00000000->Partial; dword: 00000001->Slumber}  
"LPMSTATE"=dword: 00000001 {dword: 00000000->Partial; dword: 00000001->Slumber}  
"DIPM"=dword: 00000001 {dword: 00000000->Disable; dword: 00000001->Enable}
```



NOTE: The following issues might occur when LPM is enabled on desktop platforms with Intel® Matrix storage manager installed.

- Unable to install OS
- Performance degradation
- Timeout errors reported by iastor in Microsoft* Event Viewer*

These issues are most likely caused by one or more of the attached Serial ATA devices that do not comply with the Serial ATA LPM device specification

Please refer the below article for more details.

<http://support.intel.com/support/chipsets/imsm/sb/CS-025783.htm>

****Warning:** *If you edit the registry incorrectly, you can cause serious problems that may require you to reinstall your operating system. Intel does not guarantee that problems that are caused by editing the Registry incorrectly can be resolved. E*



14 Glossary

Term	Definition
ATA	Advanced Technology Attachment
BIOS	Basic Input/Output System
BOM	Bill Of Materials
CD	Compact Disc
Chipset	Term used to define a collection of integrated components required to make a PC function.
Hard drives	Physical hard drives attached to a RAID controller
DOS	Disk Operating System
GB	Giga-byte
HDD	Hard Drive
I/O	Input/Output
ICH	I/O Controller Hub
ICH9	Intel® 82801IR/DO SATA RAID Controller
IDE	Integrated Drive Electronics
INF	Information file (.inf) used by Microsoft operating systems that support the Plug & Play feature. When installing a driver, this file provides the OS needed information about driver filenames, driver components, and supported hardware.
Intel® Option ROM (OROM)	Standard Plug and Play option ROM that provides a pre-operating system user interface for the Intel RAID implementation.
MB	Mega-byte
Migration	Term used to describe the movement of data from one configuration or usage model to another.
OEM	Original Equipment Manufacturer
Option ROM	A code module built into the System BIOS that provides extended support for a particular piece of hardware. For this product, the Option ROM provides boot support for RAID 0/1/5/10 volumes, and provides a user interface for configuring and managing RAID 0/1/5/10 volumes.
OS	Operating System
PATA	Parallel ATA
PCI	Peripheral Components Interconnect
PFW	Package for the Web
PIO	Programmed Input Output
PnP	Plug and Play



Term	Definition
Port 0..3	Term used to describe the point at which a SATA drive is physically connected to the SATA Controller. Port n is the nth of the four available ports in ICH9 systems, where n=0..3
RAID	Redundant Array of Independent Disks
RAID 0	A RAID level where data is striped across multiple physical hard drives (aka striping)
RAID 1	A RAID level where data is mirrored between hard drives to provide data redundancy (aka mirroring)
RAID 5	A RAID level where data and parity are striped across the hard drives to provide good read/write performance and data redundancy. The parity is striped in a rotating sequence (aka Stripping and rotating parity).
RAID 10	A RAID level where information is striped across a two disk array for system performance. Each of the drives in the array has a mirror for fault tolerance. (aka Stripping and mirroring)
RAID volume	A block of capacity allocated from a RAID Array and arranged into a RAID topology. Operating Systems typically interpret a RAID volume as a physical hard drive.
RAM	Random Access Memory. Usually refers to the system's main memory
ROM	Read Only Memory
SATA	Serial ATA
SCSI	Small Computer System Interface
SP#	Service Pack (number)
Strip	Grouping of data on a single physical hard drive within a RAID volume
Stripe	The sum of all strips in a horizontal axis across physical hard drives within a RAID volume
UI	User Interface